

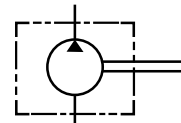
BOMBAS DE ENGRANAJES

Gear pumps
Pompes à engrenages
Pompe a ingranaggi



Gr.I Bombas engranaje/tapa eur/eje cónico 1:8 / roscada

Gr.I Gear pump/ Eur.flange/tapered shaft 1:8 /threaded side ports type
Gr.I Pompe engrènement/flasque Eur./Arbre conique 1:8 /Asp.et ref. type taraudée
Gr. I Pompe ingranaggi/flangia Eur./albero conico 1:8 /attacchi filettati

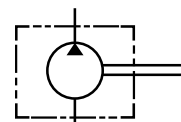


Right turn Giro a derechas	Left turn Giro a izquierdas	Ø ASPIRATION Ø ASPIRACION	Ø PRESSURE Ø PRESION	MAX PRESSURE (bar) PRESION MAX.(bar)	R.P.M. Max	cm ³ /rev	€
BTD111D01	BTD111I01	3/8" BSP	3/8" BSP	250	6000	1,1	125,53
BTD116D01	BTD116I01	3/8" BSP	3/8" BSP	250	6000	1,6	125,53
BTD118D01	BTD118I01	3/8" BSP	3/8" BSP	250	6000	1,8	125,53
BTD127D01	BTD127I01	3/8" BSP	3/8" BSP	250	6000	2,7	125,53
BTD132D01	BTD132I01	3/8" BSP	3/8" BSP	250	5000	3,2	131,00
BTD137D01	BTD137I01	3/8" BSP	3/8" BSP	250	4500	3,7	131,00
BTD148D01	BTD148I01	3/8" BSP	3/8" BSP	200	4000	4,8	131,00
BTD158D01	BTD158I01	1/2" BSP	3/8" BSP	200	3500	5,8	131,00
BTD163D01	BTD163I01	1/2" BSP	3/8" BSP	200	2900	6,3	131,00
BTD180D01	BTD180I01	1/2" BSP	3/8" BSP	200	2100	8	131,00



Gr.I Bombas engranaje/tapa eur/eje cónico 1:8 / brida alemana

Gr.I Gear pump/ Eur.flange/tapered shaft 1:8 /side ports type German
Gr.I Pompe engrènement/flasque Eur./Arbre conique 1:8 /Asp.et ref. type Allemande
Gr. I Pompe ingranaggi/flangia Eur./albero conico 1:8 /attacchi Tedesca



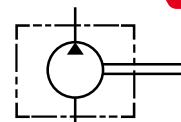
Right turn Giro a derechas	Left turn Giro a izquierdas	ASPIRATION FLANGE (mm) BRIDA ASPIRACION (mm)	PRESSURE FLANGE (mm) BRIDA PRESION (mm)	MAX. PRESSURE (bar) PRESION MAX.(bar)	R.P.M. Max	cm ³ /rev	€
BTD111D03	BTD111I03	30	30	250	6000	1,1	125,53
BTD116D03	BTD116I03	30	30	250	6000	1,6	125,53
BTD118D03	BTD118I03	30	30	250	6000	1,8	125,53
BTD127D03	BTD127I03	30	30	250	6000	2,7	125,53
BTD132D03	BTD132I03	30	30	250	6000	3,2	131,00
BTD137D03	BTD137I03	30	30	250	4500	3,7	131,00
BTD148D03	BTD148I03	30	30	200	4000	4,8	131,00
BTD158D03	BTD158I03	30	30	200	3500	5,8	131,00
BTD163D03	BTD163I03	30	30	200	2900	6,3	131,00
BTD180D03	BTD180I03	30	30	200	2100	8	131,00



Gr.I Bombas engranaje/Minicentralita

Gr.I Gear pump/Mini power packs
Gr.I Pompe engrènement/Mlmini-centrales hydrauliques
Gr. I Pompe ingranaggi/Minicentraline

NEW



Part n° Referencia	Ø PRESSURE (mm) Ø PRESION (mm)	Ø ASPIRATION Ø ASPIRACION	MAX PRESSURE.(bar) PRESION MAX.(bar)	R.P.M. Max	cm ³ /rev	€
BTD111D05	9	3/8" BSP	200	6000	1.1	116,51
BTD121D05	9	3/8" BSP	200	6000	2.1	116,51
BTD132D05	9	3/8" BSP	200	5000	3.2	116,51
BTD142D05	9	3/8" BSP	200	4000	4.2	120,06
BTD158D05	9	3/8" BSP	160	2900	5.8	120,06
BTD170D05	9	3/8" BSP	160	2900	7.0	124,33
BTD180D05	9	3/8" BSP	160	2100	8.0	124,33
BTD198D05	9	3/8" BSP	160	2100	9.8	124,33

Giro a derechas / Clockwise / Rotation droite / Gira a destra

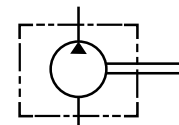
BOMBAS DE ENGRANAJES

Gear pumps
Pompes à engrenages
Pompe a ingranaggi



Gr. II Bomba engranaje/Tapa eur/eje cónico 1:8 / Brida roscada

Gr.II Gear pump/Eur.flange/Tapered shaft 1:8 /Threaded Side ports type
Gr.II Pompe engrènement/Flasque Eur./Arbre conique 1:8/ Asp. et Ref type Taraudée
Gr. II Pompe ingranaggi/flangia Eur./albero conico 1:8 /attacchi filettati

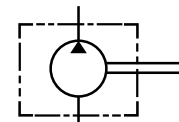


Right turn Giro a derechas	Left turn Giro a izquierdas	Ø ASPIRATION Ø ASPIRACIÓN	Ø PRESSURE Ø PRESIÓN	MAXIMUM PRESSURE (Bar) PRESIÓN MAX. (Bar)	R.P.M. Max	cm ³ /rev	€
BTD240D01	BTD240I01	1/2" BSP	1/2" BSP	250	3500	4	181,87
BTD260D01	BTD260I01	1/2" BSP	1/2" BSP	250	3500	6	181,87
BTD280D01	BTD280I01	1/2" BSP	1/2" BSP	250	3500	8	181,87
BTD2100D01	BTD2100I01	1/2" BSP	1/2" BSP	250	3500	10	187,34
BTD2120D01	BTD2120I01	1/2" BSP	1/2" BSP	250	3500	12	187,34
BTD2140D01	BTD2140I01	3/4" BSP	1/2" BSP	250	3500	14	187,34
BTD2160D01	BTD2160I01	3/4" BSP	1/2" BSP	250	3500	16	187,34
BTD2200D01	BTD2200I01	3/4" BSP	1/2" BSP	250	3500	20	187,34
BTD2230D01	BTD2230I01	3/4" BSP	1/2" BSP	200	3000	23	192,81
BTD2250D01	BTD2250I01	3/4" BSP	1/2" BSP	200	3000	25	192,81
BTD2280D01	BTD2280I01	3/4" BSP	1/2" BSP	160	3000	28	192,81
BTD2300D01	BTD2300I01	3/4" BSP	1/2" BSP	160	3000	30	192,81



Gr. II Bomba engranaje/Tapa eur/eje cónico 1:8 / Brida europea

Gr.II Gear pump/Eur.flange/Tapered shaft 1:8 /Side ports type Eur.
Gr.II Pompe engrènement/Flasque Eur./Arbre conique 1:8/ Asp. et Ref type Eur.
Gr. II Pompe ingranaggi/flangia Eur./albero conico 1:8 /attacchi Europeo

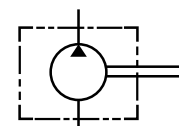


Right turn Giro a derechas	Left turn Giro a izquierdas	Ø ASPIRATION (mm) Ø ASPIRACIÓN (mm)	Ø PRESSURE (mm) Ø PRESIÓN (mm)	MAXIMUM PRESSURE (Bar) PRESIÓN MAX. (Bar)	R.P.M. Max	cm ³ /rev	€
BTD240D02	BTD240I02	30	30	250	3500	4	181,87
BTD260D02	BTD260I02	30	30	250	3500	6	181,87
BTD280D02	BTD280I02	30	30	250	3500	8	181,87
BTD2100D02	BTD2100I02	30	30	250	3500	10	187,34
BTD2120D02	BTD2120I02	30	30	250	3500	12	187,34
BTD2140D02	BTD2140I02	40	30	250	3500	14	187,34
BTD2160D02	BTD2160I02	40	30	250	3500	16	187,34
BTD2200D02	BTD2200I02	40	30	250	3500	20	187,34
BTD2230D02	BTD2230I02	40	30	200	3000	23	192,81
BTD2250D02	BTD2250I02	40	30	200	3000	25	192,81
BTD2280D02	BTD2280I02	40	30	160	3000	28	192,81
BTD2300D02	BTD2300I02	40	30	160	3000	30	192,81



Gr. II Bomba engranaje/Tapa Bosch/eje cónico 1:5 / Brida alemana

Gr. II Gear pump/Bosch flange/Tapered shaft 1:5 /Side ports German type
Gr.II Pompe engrènement/Flasque Bosch/Arbre conique 1:5/ Asp. et Ref type Allemande
Gr. II Pompe ingranaggi/flangia Bosch/albero conico 1:5 /attacchi Bosch



Right turn Giro a derechas	Left turn Giro a izquierdas	Ø ASPIRATION (mm) Ø ASPIRACIÓN (mm)	Ø PRESSURE (mm) Ø PRESIÓN (mm)	MAXIMUM PRESSURE (Bar) PRESIÓN MAX. (Bar)	R.P.M. Max	cm ³ /rev	€
BTD260D04	BTD260I04	40	35	250	3500	6	181,87
BTD280D04	BTD280I04	40	35	250	3500	8	181,87
BTD2120D04	BTD2120I04	40	35	250	3500	12	187,34
BTD2140D04	BTD2140I04	40	35	250	3500	14	187,34
BTD2160D04	BTD2160I04	40	35	250	3500	16	187,34
BTD2200D04	BTD2200I04	40	35	250	3500	20	187,34
BTD2230D04	BTD2230I04	40	35	200	3000	23	192,81
BTD2250D04	BTD2250I04	40	35	200	3000	25	192,81
BTD2280D04	BTD2280I04	40	30	160	3000	28	192,81

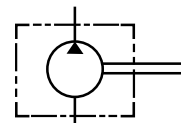
BOMBAS DE ENGRANAJES

Gear pumps
Pompes à engrenages
Pompe a ingranaggi



Gr.III Bombas engranaje/Tapa eur/eje conico 1:8 brida roscada

Gr.III Gear pump/Eur.flange/Tapered shaft 1:8 /Side ports type threaded
Gr.III Pompe engrenage/Flasque eur./Arbre conique1:8 /Asp.et Ref. taraudée
Gr. III Pompe ingranaggi/flangia Eur./albero conico 1:8 / attacchi filettati

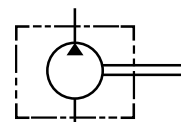


Right turn Giro a derechas	Left turn Giro a izquierdas	Ø ASPIRATION Ø ASPIRACION	Ø PRESSURE Ø PRESION	MAXIMUM PRESSURE (Bar) PRESION MAX. (Bar)	R.P.M. Max	cm ³ /rev	€
BTD3220D01	BTD3220I01	3/4" BSP	3/4" BSP	200	3000	22	278,99
BTD3260D01	BTD3260I01	3/4" BSP	3/4" BSP	200	3000	26	278,99
BTD3280D01	BTD3280I01	1" BSP	3/4" BSP	200	3000	28	278,99
BTD3320D01	BTD3320I01	1" BSP	3/4" BSP	200	3000	32	278,99
BTD3360D01	BTD3360I01	1" BSP	3/4" BSP	200	3000	36	284,46
BTD3420D01	BTD3420I01	1" BSP	3/4" BSP	200	2800	42	284,46
BTD3460D01	BTD3460I01	1" BSP	3/4" BSP	200	2400	46	284,46
BTD3500D01	BTD3500I01	1" BSP	3/4" BSP	200	2400	50	284,46
BTD3550D01	BTD3550I01	1" BSP	3/4" BSP	200	2400	55	284,46



Gr.III Bombas engranaje/Tapa eur/eje cónico 1:8 brida europea

Gr.III Gear pump/Eur.flange/Tapered shaft 1:8 /Side ports type Eur.
Gr.III Pompe engrenage/Flasque eur./Arbre conique 1:8 /Asp.et Ref. type Eur.
Gr. III Pompe ingranaggi/flangia Eur./albero conico 1:8 /attacchi Europeo



Right turn Giro a derechas	Left turn Giro a izquierdas	Ø ASPIRATION (mm) Ø ASPIRACION (mm)	Ø PRESSURE (mm) Ø PRESION (mm)	MAX. PEAK PRESSURE (Bar) PRESION PUNTA (Bar)	R.P.M. Max	cm ³ /rev	€
BTD3220D02	BTD3220I02	40	40	250	3000	22	278,99
BTD3260D02	BTD3260I02	40	40	250	3000	26	278,99
BTD3280D02	BTD3280I02	40	40	250	3000	28	278,99
BTD3340D02	BTD3340I02	50	40	250	3000	34	278,99
BTD3390D02	BTD3390I02	50	40	250	3000	39	284,46
BTD3430D02	BTD3430I02	50	40	250	2800	43	284,46
BTD3460D02	BTD3460I02	50	40	250	2400	46	284,46
BTD3510D02	BTD3510I02	50	40	250	2400	51	284,46
BTD3550D02	BTD3550I02	50	40	250	2400	55	284,46

BOMBAS DE ENGRANAJES

Gear pumps
Pompes à engrenages
Pompe a ingranaggi

Kit juntas Bomba BTD



BTD pump joints kit
Kit joints pompe BTB
Kit guarnizioni Pompa BTB

Part n° Referencia	GROUP GRUPO	MATERIAL	€
JRBDT1-N	1	NBR	10,66
JRBDT2-N	2	NBR	10,73
JRBDT3	3	NBR	7,15
JRVBDT1-N	1	FKM	14,31
JRVBDT2-N	2	FKM	14,31
JRVBDT3	3	FKM	14,31

Codo 90º para brida Europea con 3 agujeros de fijación



90° Elbow for European flange with 3 fixing holes
Coude 90° pour bride Européenne avec 3 trous de fixation
Flangia 90° per attacco Europeo a 3 fori

Part n° Referencia	THREAD ROSCA	SCREWS THREAD ROSCA TORNILLOS	DISTANCE BETWEEN SCREWS DISTANCIA ENTRE TORNILLOS	€
RP901038M	3/8" BSP	M6X20* x3 uds	30mm	14,34
RP901012M	1/2" BSP	M6X20* x3 uds	30mm	14,34
RP902012M	1/2" BSP	M8X25* x3 uds	40mm	19,89
RP902034M	3/4" BSP	M8X25* x3 uds	40mm	19,89
RP903A034M	3/4" BSP	M10X30* x3 uds	51mm	30,99
RP903A100M	1" BSP	M10X30* x3 uds	51mm	30,99

*Rosca Métrica de los tornillos / *The Metric thread of the screws / *Filetage Métrique des vis / *Filetto metrico dei bulloni

Brida recta



Straight flange
Bride droite
Flangia diritta

Part n° Referencia	THREAD ROSCA	SCREWS THREAD ROSCA TORNILLOS	Ø	€
RPI1M	3/8" BSP	M6X16* x4 uds	30	29,52
RPI2M	1/2" BSP	M8X20* x4 uds	40	37,60
RPI3AM	3/4" BSP	M10X25* x4 uds	51	51,80

*Rosca Métrica de los tornillos / *The Metric thread of the screws / *Filetage Métrique des vis / *Filetto metrico dei bulloni

Codo 90º para brida Bosch con 4 agujeros de fijación



90° Elbow for 4-holes squared shape flange
Coude 90° pour bride 4 trous de fixation forme carré
Flangia 90° per attacco Bosch a 4 fori

Part n° Referencia	THREAD ROSCA	SCREWS THREAD ROSCA TORNILLOS	Ø	€
GF3590038	3/8" BSP	2-M6X35 / 2-M6X20*	35	25,06
GF3590012	1/2" BSP	2-M6X35 / 2-M6X20*	35	25,06
GF4090012	1/2" BSP	2-M6X45 / 2-M6X20*	40	29,73
GF4090034	3/4" BSP	2-M6X45 / 2-M6X20*	40	29,73

*Rosca Métrica de los tornillos / *The Metric thread of the screws / *Filetage Métrique des vis / *Filetto metrico dei bulloni

Chavetas



Key
Clavette
Chiavette

Part n° Referencia	GROUP AXIS 1:8 GRUPO EJE 1:8	€
CVTBDT1	1	3,55
CVTBDT2	2	3,55
CVTBDT3	3	3,55